

December  
2022



Menifee Valley Lodge #289

# trestleboard

A newsletter serving the Masonic and affiliated bodies of Menifee Valley, CA



**Lodge Pages**

- Master's Message 1
- Senior Warden 2
- Junior Warden 3
- Secretary 3

**Individual Highlights:**

- Education 4
- Candidate 5
- MVL Highlights 6
- M.M-Poem 8
- Activities 9
- Announcement 10
- Calendar 13
- Committees 14
- Officers 15



Follow us on Facebook, where you can upload stories, photos and news events! You can also find Masonic education.

Please send stories, photos, comments or corrections to the editor at:

sharmaelly@gmail.com

Do you want to get the Trestleboard sooner? Sign up for email delivery and you'll get it before the 1<sup>st</sup>!

*Trestleboard - a draftsman's designing board; that on which a Mason draws his designs for his character and spiritual growth; that on which the Worshipful Master lays out his designs for the workmen; a Lodge's newsletter and calendar of events.*

## From the East

Jerry Donathan, PM  
Worshipful Master



Hello **Brethren**,

Wishing every one of you a Happy and Joyous Holiday Season. Be safe and careful as there is a lot of sickness out there and Remember the reason for the season !!!!

Fraternally,

Jerry Donathan

Worshipful Master

MVL #289



### DISTRESSED & WORTHY BROTHER RELIEF FUND

#### DO YOU NEED MASONIC RELIEF DUE TO COVID-19?

Masonic Outreach Services is here to help those who find themselves in need due to COVID-19. Relief includes emergency financial assistance, case management, and information and referral services.

Learn more at [masonichome.org](http://masonichome.org)

Or call (888) 466-3642 to speak with Masonic Outreach staff



*A beautiful system of Morality, veiled in Allegory, illustrated by Symbols*



## From the West

Harold Whitford, PM, SW

### Hello Brethren,

This was in the Rocky Mountain News 1952 (70 years ago) Being a Lover of our military I saved it all these years. Hope you enjoy and appreciate something from that "Forgotten War".

'Somewhere in Korea ,1952-A Korean Christmas Carol' It was' the night before Christmas, and all thru' the tent, was the odor of fuel oil. The stove pipe was bent.

The shoe packs were hung by the oil stove with care; in hope that they'd issue each man a new pair.

The weary GI's were sacked out in there beds' and visions of sugar-babes danced thru' their heads.

When up on the ridge-line, there arose such a clatter, (a Chinese machine gun had started to chatter.)

I rushed to my rifle and thru' back the bolt, the rest of my tent-mates awoke with a jolt.

Outside we could hear our platoon sergeant, Kelly. A hard little man with a little pot-belly.

"Come Yancey, come Clancey, come Conners and Watson, Up Miller, up Shiller, Up Baker and Dodson!"

We tumbled outside in a swirl of confusion, so cold that each man could have used a transfusion.

"Get up on that hill-top and silence that Red, and don't you come back , 'til you're sure he is dead!"

Then, putting his thumb up in front of his nose, Sergeant Kelly took leave of us shivering Joe's.

But we all heard him say in a voice soft and light, "Merry Christmas" to all , may you live thru' the night". Author Unknown

Respectfully,

Harold Whitford, P.M.  
Senior Warden



**This is a friendly reminder that your lodge dues for 2023 are due December 31, 2022.**

**You can now conveniently pay your dues online and by credit card. We hope you find this service convenient and useful. Here's how to pay your dues online:**

1. **[Pay via credit card on iMember](#)**. If you haven't already logged in to the system, click Member Registration. You will need your member ID, your lodge number, and your email address to log in for the first time.
2. **Follow the prompts on the screen to Pay Dues. We accept VISA and Mastercard.** Once you pay, your new dues card will immediately be accessible in iMember. Just follow the links on the "Thank You" page to see it.
3. **Your lodge secretary will be notified that you paid your dues.**

**PAY DUES**

**And as always, you are welcome to pay your dues directly to your lodge secretary.**

**If you are unable to pay your dues this year or can only afford to pay a portion of your dues, we encourage you to speak to your lodge secretary to request a full or partial remission of your dues. Your membership is important to us, so please take advantage of this if paying dues will cause you hardship.**

**REQUEST REMISSION**





## From the South

Bro. Sammy Gillo

Greetings Brethren,

In previous articles, I mentioned several masonic education and dreams why we become master masons. These also remind us the core reasons why we became members of this fraternity. I hope it will help us all remember those reasons and strengthen our commitment to them. This article is based on a brief essay provided to members by different concordant bodies to remind the brethren that, at their core, they are Master Masons. However, it is good for all of us, regardless of our Mason affiliations, to remember why we chose this path in the first place.

Remember the Three Principal Tenets of Freemasonry are Brotherly Love, Relief and Truth. Again, this article will focus on Relief. Many of us think of Relief as only a form of charity. However, in Masonry it has a greater and more all-encompassing meaning. A person may suffer for many reasons, not just financial. These include family or work issues or other problems he may be encountering. Although it may seem excessively simple, many times all he needs is someone to talk to about these issues. This tenet of Masonry calls us to relieve distress by all means available to us, not just financial assistance. It is our responsibility to sympathize, console or restore peace to troubled minds wherever and wherever possible. Always apply and consider the tenets of freemasonry inside the lodge or out of the lodge to deviate from disharmonizing between the members which another tenet of freemasonry steps in which is Brotherly love.

Fraternally,  
Junior Warden



## From the Secretary

Bro. Jerico Alvarez

**Brethren,**

Being a volunteer on fraternal organization that spans all generations, Freemasonry has a unique communication challenge. We must have the ability to communicate with numerous demographics across multiple channels. Our audiences are fairly diverse and without the ability to dictate our communication standard, we must use several means to reach all of our goals. This poses real problems to the secretary. Instead of technology saving time and energy, they must exchange efforts across the board trying to provide the true balance of effective communication without being annoyance. It provides an integrated approach where a single message is created, and then the system transmits it to the members according to their personal preferences. At that moment, it handles mass communications using two forms, "Posts and Events".

Posts are used to communicate something that has happened or for general notices such as posting photos of a recent degree initiation, passing, and raising of a brother are the best examples. When a post is created it is saved in such a way as to make it visible through the member portals and Grand View social in iMember.

You simply select the audience, type the message, and the system manages who has access and tracks views. This also creates a feed of information for those brothers who prefer to check in periodically to see what is going on.

Once the post is saved, you're presented with options for outbound transmission. Here you can send emails, print mail-merged form letters, and with a messaging account you can send out a post as a text message. The text message has a link that opens on the user's phone so they can view the entire post. Another important consideration is that the posts linger in the portals. This provides content for those who browses the feeds and want to catch up on what is happening at the lodge. If you would like to delete a post you can do so but will expire sixty days after they are saved. If posts are about things that have happened, events are for things that are going to happen. They collect and store information appropriate for an upcoming event, such as time, place, and attire. Events show up on the lodge locator, member feeds, and Grand View Social.

Much like posts, once an event is saved you are presented with options to send emails and print mail-merged letters. With a messaging account, you will have the option of scheduling broadcasts that will send text messages, make robocalls, and send emails based on a member's communication preferences. All of this will be at a date and time you specify. Creating a broadcast takes only a few seconds and can be scheduled by months in advance. Posts and Events provide an interface to publish information and have it distributed to your target audiences with as little effort as possible. Alleviating the need for managing multiple contacts lists, creating multiple communications for each medium, and trying to see that everyone is pleased.

Therefore, please take your time to read and respond to our important announcements and communications via email or group text.

Concept: Grand View Communications 2022

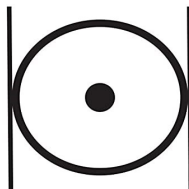
Solemnly and Sincerely,

Bro. Jerico Alvarez  
Lodge Secretary

### BIRTHDAYS

NOV

Member
Thacker, Kenneth
Cagungao, Adelbert
Marston, David
Mac Quidy, Paul
Alvarez, Jerico
Barber, Bo
George, Marple
Whitford, Harold



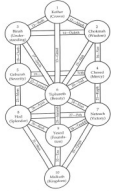
### MASONIC BIRTHDAYS

NOV

Member	Birthdate
Staley, Richard	12/11
Wells, Monte	12/21



*"The only way on earth to multiply happiness is to divide it. -Paul Scherer"*



# Masonic Education

## ACACIA

Acacia sprigs were planted by the Hebrew people at the head of a grave for 2 purposes:

1. To mark the location of the grave.
2. To show their belief in immortality.

**Immortality:** Both the Hebrews and the Egyptians believed that because of its hardness, durability and evergreen nature, that this tree was a symbol of both innocence and immortality.

**Shittim:** In the Bible, it is called "shittim". Chosen above all others, shittim was the wood which God commanded Moses to use to create the Ark of the Covenant into which Moses placed the 2 stone tablets upon which The 10 Commandments were carved.

**Ark of the Covenant:** The entire chapter of Exodus 37 is devoted to the creation of the Ark of the Covenant. The Ark was first constructed of shittim wood and then overlaid with gold before being placed into the Holy of Holies (Sanctum Sanctorum) in Solomon's Temple.

**Hardwood:** The wood is a beautiful hardwood with dark and light coloring. Due to this intermingled coloring, furniture and flooring made from its wood is both very durable, as well as exceptionally beautiful.

The tree is a thorny, and many times multi stemmed tree or bush which many would call a "scrub" tree because it never grows large and tall like an oak, walnut or many other hardwood trees. Depending on the species, the seeds grow into either trees or shrubs, which are hardy in many climates, but they are not long-lived trees. Their typical lifespan is between 30 to 40 years.

**Deep Roots:** In order for it to survive in very dry, arid lands such as parts of Israel, Iran, Iraq, Australia, Africa, etc., it has very deep roots from which to absorb more water in arid lands. Some species have roots which are 40-60 meters (approximately 120-180 feet deep).

**Genus:** The genus Acacia belongs to the family Mimosaceae and is related to both the Locust and the Mimosa trees. There are approximately 1350 species of Acacia found throughout the world and close to 1000 of these are found in Australia.

Its most common name, world-wide is known as "Wattle". which is Australia's national floral emblem is Acacia pycnantha, the Golden Wattle. Australians celebrate Wattle Day on the 1st of September each year.

**Varieties:** Different varieties are common in many countries such as Australia, Africa, Madagascar, throughout Asia, Israel, Iran, Iraq, South America, southern parts of the United States as well as in the Pacific. They are found in a wide range of differing habitats from coastal, wet and tropical to sub-alpine (just below treeline), but are most prevalent in the arid and semi-arid areas.

Unlike most other plants, they will even grow on beaches and in rocky areas... near the ocean taking their moisture from the

saltwater!

**The Acacia Flower:** Each year the tree flowers. Depending on the variety, the flowers can be yellow, white, cream-colored, or a reddish-pink). Afterward, seed pods which are about three inches long, containing from five to six brownish-black seeds, ripen and turn from green to brown. When fully ripe, the pods split to release the seeds.



**Seeds:** Interestingly, unlike most plants, its seeds have a hard coating which, in most cases, is nearly impervious to water, therefore, germination does not usually occur unless some sort of pretreatment is first carried out.

In nature, fire is the most common means of getting the seed pods to split open and reseed themselves.

### As a Human Food Source

As a human food source, it has been a subject of increasing interest and research in recent years. Much of this work is based on understanding the traditional Aboriginal use of many of these species.

**Wattle:** While the seed from most of the wattle varieties are generally thought of as being poisonous or generally inedible, there are a few exceptions. Forty-seven species of wattle trees growing in southern Australia produce seeds which are suitable for human food. Some species of it are also used as stock food, for example, the pods of *A. farnesiana* (prickly Moses) and *A. cambagei* (gidyea) are eaten by sheep.

In both Australia and Africa, there are several species of the seed which are edible. Seed is eaten and prepared in different ways by indigenous (originating and living naturally, usually off the land) Aboriginal Australians and is beginning to be marketed to other countries.

<https://www.masonic-lodge-of-education.com/acacia.html>



*"The poor man is not he who is without a cent, but he who is without a dream. -Harry Kemp"*

# Candidate's Corner

## Turning Prospects Into Members

What's behind the recent uptick in applications? A few things. In many cases, candidates who approached lodges before the pandemic are still working their way through the queue and beginning to have their degree dates scheduled. Others, awaiting second or third degrees, are similarly getting back on track. But the largest share comes from an [online awareness campaign](#) run by the Grand Lodge over the summer. The results there have been impressive. Between June and November, that campaign directed nearly 2,000 prospective Masons to local lodges throughout the state. During that time, nearly 85 percent of all California lodges received [at least one prospect referral](#)—and usually more than that. (According to [last month's Question of the Month in the Leader](#), 73 percent of lodges had at least one online prospect from the campaign now progressing toward an application.)

When it comes to reversing a 50-year membership drain, numbers like that are a blessing. But for lodge officers trying to draw up a degree calendar, they can also pose a real challenge. More prospects means more degrees—and more rehearsals, practices, and planning. But for lodges that are still working out the kinks from the pandemic hiatus, getting back into ritual work is a daunting task.

According to Gomez, one factor above all others separates good ritual from bad ritual: preparation. "I've seen people with no skill at oratory produce quality ritual and I've seen great orators completely flop," Gomez says. "The difference is always the amount of preparation they've dedicated."

That, Gomez says, isn't just a matter of logging enough hours practicing degree lectures. It's also about dedicating time and care toward making a friend a future brother. "It's a powerful gift," he says. "So treat it as such."

Research shows that the biggest differentiator between Masons who value their membership in the fraternity and stay engaged with their lodge and those who don't is whether they feel they've had a meaningful experience at lodge. The ritual plays an enormous role in that—and as such, it's not just a tool for making Masons. It's also the tool that keeps the lodge together. "Take advantage of ritual practice to reinforce relationships," Gomez says. Ritual practice doesn't have to just be about rote memorization. In fact, it shouldn't be mere memory work. Instead, dwell for a time on the meaning behind what you're doing and saying. Ritual work is largely an oral tradition passed down from member to member and requires the sort of interpersonal education Gomez advocates for. "Practicing together is itself an educational tool," Gomez says. "Take advantage and learn symbiotically."



# MENIFEE VALLEY LODGE HIGHLIGHTS

## November Stated Meeting



*"Growing old is no more than a bad habit which a busy man has no time to form -Ande Maurois"*



## Keep Cool & Protect Your Health When It's Hot!

### Tips to Prevent Heat-Related Illness

- ◆ Stay hydrated throughout the day by drinking more water than usual. Don't wait until you're thirsty to drink. Avoid alcohol, caffeine and liquids with large amounts of sugar.
- ◆ Schedule outdoor activities for early in the morning or later in the evening. Minimize or avoid physical exertion.
- ◆ Pace your activity. Start activities slow and pick up the pace gradually.
- ◆ Wear lightweight, light-colored, and loose clothing. Wear sunglasses to protect your eyes from UV rays. Wear and reapply sunscreen as indicated on the package.
- ◆ Rest in the shade or a cool place every chance you get to protect you from the sun.
- ◆ Stay in air-conditioned space.
- ◆ If you do not have an air conditioner, use a fan and make sure your windows are open.
- ◆ Do not eat heavy or oily foods and avoid cooking with your oven.
- ◆ Take a cool shower or bath to cool down.
- ◆ Do not sit in a hot car, even if it's for a short period of time. Never leave a person or animal alone in a vehicle during high temperatures.
- ◆ Check on your friends and neighbors who are elderly or have medical conditions. Who's at Risk? Older individuals are at higher risk for health problems when it's very hot. Please be extra cautious if you have:
  - \* Have existing medical conditions
  - \* Take medication for high blood pressure or use IV drugs
  - \* Have mental health conditions
  - \* Have been drinking alcohol
  - \* Have had a previous heat-related illness Save Energy Costs
  - \* Set your thermostat at 78 degrees or higher. You can save 3-5 percent on your air conditioning cost for each degree you raise the thermostat.
  - \* Keep your air conditioning duct vents clean and clear. Replace filters often.
  - \* Make sure furniture or drapes are not blocking air vents or preventing cool air from circulating. Replace light bulbs with compact fluorescent bulbs (CFL'S). CFLs use about ¼ less electricity and last ten times longer than incandescent bulbs.
  - \* Turn off your air conditioner and open windows for a cross breeze on cooler evenings.
  - \* Keep lights off or turned down. ☑ Get your home weatherized.



#### RUSTERS RANCH HASH

- 1 can of Corned Beef
- 1 medium Onion
- 1 Red, Orange or Green Bell Pepper
- 1 Lg Russet Potato
- Salt and Pepper
- 1 Clove of Garlic
- 2 Tblsp of Butter

In a large cast iron skillet melt butter. Sauté finely chopped onion, bell pepper and potato till tender but not cooked all the way. Open can of corned beef and break into pieces into skillet. Stir gently until heated through. Salt and pepper to taste. Turn off fire let sit on stove with foil lid for 10 mins and serve. I serve with a side fried egg over the top of hash on plate or side salad

City of Menifee



*"The price of success is perseverance. The price of failure comes cheaper. — Anonymous"*

# The Masonic Monthly Poem

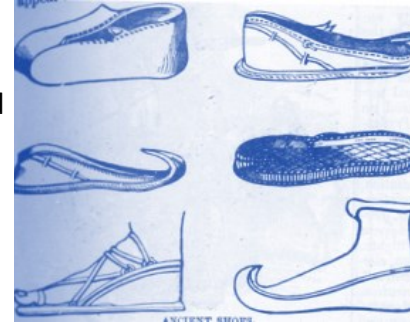
## Masonic Blue Slipper

**The Masonic Shoe also called the Blue Slipper, is symbolic of a physical confirmation of a spoken deed.** To unloose one's shoe and give it to another was the way of confirming a contract in ancient times.

**In The First Degree:** The Shoe Denotes a Promise

In the Book of Ruth in the Christian Bible, we read that Boaz, (a wealthy land owner and Solomon's Great Great Grandfather,) having proposed to the nearest kinsman of Ruth to exercise his legal right by redeeming the land of Naomi, which was offered for sale, and marrying her daughter-in-law. The kinsman being unable to do so, resigned his right of purchase to Boaz. The scriptures go on to say: Ruth 4: 7-8:

"Now this was the manner in former time in Israel concerning redeeming and concerning changing, for to confirm all things; a man plucked off his shoe and gave it to his neighbor: and this was a testimony in Israel." Therefore, the kinsman said unto Boaz, "Buy it for thee." So he drew off his shoe. The reference to the shoe in the First Degree is symbolic of a Covenant (a promise) to be entered into.



In the Third Degree, the symbolism is altogether different:

**Third Degree:** Removal of Both Shoes When On Sacred Ground

**Discalceation:** Discalceation is the ceremony of the removal of both shoes as a token of respect when we are on or about to approach holy ground.

**Exodus 3:5:** The angel of the Lord, at the burning bush, exclaimed to Moses: "Draw not nigh hither. Put off thy shoes from off thy feet, for the place whereon thou standest is holy ground."

**Joshua 5:15:** "And the captain of the Lord's host said unto Joshua, Loose thy shoe from off thy foot; for the place whereon thou standest is holy." The Rite of Discalceation has always been and is still used among the Jewish people and other Oriental nations when entering their temples and other sacred edifices.

**Pythagoras to his Disciples: (in Greek)** translated as: "Offer sacrifice and worship with thy shoes off."

**Mohammedans:** When Mohammedans are about to perform their devotions, they always leave their slippers at the door of the mosque.

**Druids:** The Druids practiced the same custom whenever they practiced their sacred rites.

**Ancient Peruvians:** The ancient Peruvians left their shoes at the porch when they entered the magnificent temple consecrated to the worship of the sun.

**One Family?** Adam Clarke, author of *Commentary on Exodus*, believes that the custom of worshiping the Deity, barefooted, was so general among all nations of antiquity that he assigns it as one of his 13 proofs that the whole human race has been derived from one family.

It is noteworthy to remember that in ancient times, shoes as we know them, today, were not available. Both men and women wore sandals. The blue slipper was probably a [sandal](#) of some type.

Why do we use the term "Blue Slipper" when most sandals are made of brown leather? The answer lies in learning the true color of [Masonic blue](#).





## Concordant Bodies



Job's Daughters Bethel No. 165,  
 Meets 2nd and 4th Sundays, 7:00pm  
 Carrie Ghent, Bethel Guardian,  
 951-271-2054  
 Bro. Alan Walbridge, AG  
 909-241-5547

**SAVE THE DATE!**

### Inside this Month's Issue

- \* Inside the Endomosaic
- \* What's Old is New Again
- \* A Temple on the Hill
- \* The Spit-Shine
- \* The Shredder
- \* In L.A., An Artist's Legacy
- \* A Degree, Generations in the Making
- \* Member Profile: Zahid Peoples

Click on the image below to take you to the virtual CA Freemason magazine.



***"There is no future in any job. The future lies in the man who holds the job. -- George Crane"***



# ANNOUNCEMENT FROM THE SECRETARY

## Menifee Valley Lodge No. 289

PO BOX 312 Sun City, CA 92586-0312

### Brethren of MVL289,

The monthly Stated Meeting is scheduled on December 8, 2022 at 7:00pm. Dinner will be served at 6:00 pm so please come in early for some important announcement from Lodge Officers and for Great food, and Fellowship.

Officer Attire: **Tuxedo.**

Members/ Visitors: **Business Suit**

Menu: **Potluck**

### \*\*\*Schedule of Events\*\*\*

**4:30pm** - Lodge will be open. FC's, EA's, candidates, and petitioners will help prepare refreshments in the kitchen.

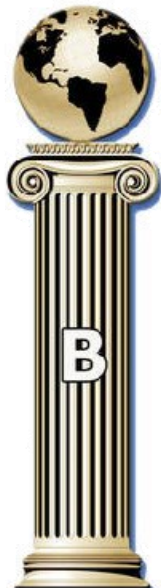
**5:00pm** - Welcoming committees will be available for petitioners in the hall. Application form is available upon request.

**5:30pm** - Important announcement and upcoming events from the Worshipful Master or Senior Warden.

**6:00pm** - Invocation. Then dinner start. Introduce returning members, visiting brethren and petitioners. (Please bring \$10 contribution for quality meals).

**7:00pm** - Stated Meeting, and Transaction of new business, annual election of lodge officers and Masonic Hall Association Committee members in the Lodge room.  
(Masons only).

We are looking forward to your attendance at the event. Peace and Harmony prevailing and God Bless to all Masons.





# ANNOUNCEMENT FROM THE SECRETARY

## Menifee Valley Lodge No. 289

PO BOX 312 Sun City, CA 92586-0312

### Brethren of MVL289,

Please mark your calendar for the following MVL 289 events for the Month of Dec 2022. If you have questions or concerns, let the Lodge Secretary/Assistant Lodge Secretary know in advance so that the events will be modified with the WM's guidance:

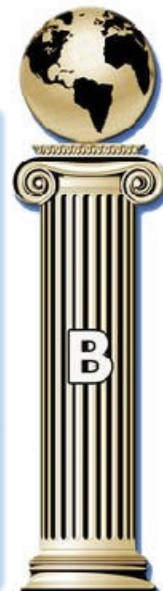
### \*\*\*Schedule of Events\*\*\*

**Dec 08, 2022 7:00 pm**—Stated Meeting.

**Dark**

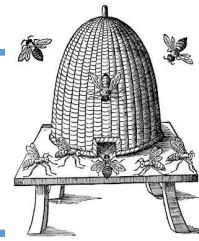
We are looking forward to your attendance at the event.

Peace and Harmony prevailing and God Bless to all Masons.



*"In the middle of difficulty lies opportunity. — Albert Einstein"*

# December 2022



Sun	Mon	Tue	Wed	Thu	Fri	Sat
				1	2	3
4	5	6	7	8 	9	10
11	12	13	14	15	16	17
18	19	20	21	22	23	24
25 	26	27	28	29	30	31 December: Birthstone: zircon 

**2022 LEADERSHIP RETREATS**



## We're Back!

REGISTER NOW! 

LAKE TAHOE \* PALM SPRINGS \* SAN RAMON \* IRVINE



**Masonic Homes of California**

### WE'RE HERE TO HELP

RELIEF FOR CALIFORNIA MASONS AND THEIR FAMILIES

- Information and referrals
- Senior communities in Covina and Union City
- Statewide Masonic Outreach Services for members of all ages and their families
- Transitions short-term care for neurological and post-surgical rehabilitation (Union City)
- The Masonic Center for Youth and Families in San Francisco and Covina—with telehealth services now available everywhere
- **NEW!** Shared housing for seniors in Covina

CONTACT US TODAY TO ACCESS YOUR MEMBER BENEFITS AND SERVICES:  
[masonichome.org](http://masonichome.org)  
 (888) 466-3642  
[mcyaf.org](http://mcyaf.org)  
 (877) 488-6293 (San Francisco)  
 (626) 251-2300 (Covina)

**Masonic Value Network:**  
 Care Resources +  
 Prescription Discounts  
[masonichome.org/ValueNetwork](http://masonichome.org/ValueNetwork)

**OSI Schedule of Events 2022 Starts @ 7:00 P.M.**

- ◆ August 2022—Dark
- ◆ 09/20/22—Hemet San Jacinto Lodge # 338, 1<sup>st</sup> Degree, Master's Lecture
- ◆ 10/19/22— Meniffee Valley Lodge # 289, Balloting, Flag Presentation, and Elections.
- ◆ 11/21/22—Temecula Catalina Island Lodge #524, Installation of Lodge Officers
- ◆ December 2022—Dark



*"Problems are only opportunities in work clothes. — Henry J. Kaiser"*

# Committees



Here are our committees for 2022. By being a Committee member, you are “paying it forward” to the Lodge by giving a little of your time. Some Committees only meet once a year, others quarterly, and some monthly. The point is, we need your help. Contact the Chairman for meeting times.

<u><b>Audit</b></u>	<u><b>Charity &amp; Relief</b></u>	<u><b>Sickness &amp; Distress</b></u>	<u><b>Hiram Award</b></u>	<u><b>Funeral</b></u>
CH –	Jerry Donathan, PM, WM Harold Whitford, PM, SW	CH –Harold Whitford, PM	Jerry Donathan, PM, WM Wor Harold Whitford, PM, SW	Wor Harold Whitford, PM, SW  Wor Allan Bowman, PM, Chaplain  Bro Jerico Alvarez
<u><b>Budget</b></u>	<u><b>Widows</b></u>	<u><b>Hall Association</b></u>	<u><b>Trestleboard</b></u>	<u><b>Refreshments</b></u>
CH—Wor Chuck Markel, PM Bro Sammy Gillo Bro Jerico Alvarez	CH – Harold Whitford, PM Wor Allan Bowman, PM  <u><b>Finance</b></u> CH –Wor Jerry Donathan, SW	CH- Bro Sammy Gillo Pres (24) Bro Devynn Hicks VP(24) Bro Jerico Alvarez Sec (24) Chuck Markel, PM —Treasurer Bro Jose Shepard BM (24) Bro Sherman Hernaez (24) Wor Harold Whitford, PM Ex Officio Wor Jerry Donathan , WM Ex Officio	Editor—Wor Jerry Donathan, PM Editor – Bro Sammy Gillo Asst Secretary Editor—Bro Jerico Alvarez Secretary  <u><b>Public Schools</b></u> CH –	CH– Vacant Sr. & Jr. Stewards All EA’s & FC’s Newly Raised MM’s
<b>Assignments</b>				
<u><b>Officer’s Coach</b></u>	<u><b>Masonic History</b></u>	<u><b>Photographer</b></u>	<u><b>Fraternal Support Ambassador</b></u>	<u><b>Head Candidate Coach</b></u>
Wor Chuck Markel, PM  Wor Harold Whitford, PM Assistant	Any Willing Brother	Bro Bud Smith	Wor Allan Bowman, PM	WB Harold Whitford
<u><b>Member Retention</b></u>	<u><b>Executive Committee</b></u>	<u><b>Masonic Education</b></u>		
CH –		Bro Dean Malibiran  Any Willing Brother		
			<u><b>Facebook/Website</b></u>	
			CH – Bro Sammy Gillo Bro Jerico Alvarez Bro Adelbert Cagungao	





**Menifee Valley Masonic Lodge**

27221 McCall Blvd.  
 Menifee, CA 92585 OR  
 PO Box 312  
 Sun City, CA 92586  
 PH: (951) 679-9493  
 Text: (951) 349-4957

**Trestleboard Editor:**

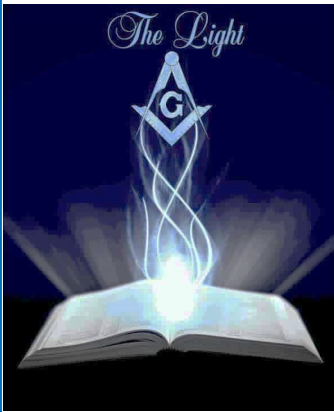
**Sammy Gillo, Asst Secretary**  
[sharmaelly@gmail.com](mailto:sharmaelly@gmail.com)

**We're on the Web!**

See us at:  
<http://lodge289.freemason.org>  
<https://m.facebook.com/MenifeeValleyMasons>  
 or for the Crystal Ballroom:  
<http://lodge289.freemason.org>

**Menifee Valley Lodge #289 Officers**

<b>Worshipful Master</b>	Wor Jerry Donathan, PM
<b>Senior Warden</b>	Wor Harold Whitford, PM
<b>Junior Warden</b>	Vacant
<b>Treasurer</b>	Wor Chuck Markel, PM
<b>Secretary</b>	Jerico Alvarez
<b>Assistant Secretary</b>	Sammy Gillo
<b>Chaplain</b>	Wor Allan Bowman, PM
<b>Senior Deacon</b>	Onofre Rasalan
<b>Junior Deacon</b>	Adelbert Cagungao
<b>Marshal</b>	Jose Shepard
<b>Senior Steward</b>	Dean Malibiran
<b>Junior Steward</b>	Angel Panganiban
<b>Tiler</b>	Vacant
<b>Officer's Coach</b>	Wor Chuck Markel, PM
<b>Inspector 826<sup>th</sup> Masonic District</b>	Wor Carl Black, PM



**Did you know that being an officer is both a privilege and an honor? These leaders have made a commitment to being at the practices and meetings/degrees and doing an outstanding job. We are all indebted to them for this commitment and their efforts. If you are interested in becoming an officer, please contact the Worshipful Master or the Officers Coach listed above.**



Annual Trestleboard Sponsorships and business card ads help defray the annual cost of printing and mailing the Trestleboard to those Brothers, widows and friends of the Lodge who are not adept at electronic publications.

If you can afford to sponsor, please see your Lodge Secretary.

Business card ads are limited by the CMC to brother Mason's only.

If you wish to move mountains tomorrow, you must start by lifting stones today.



Integrity



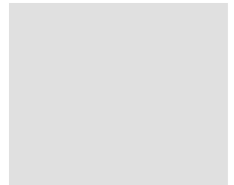
is choosing your thoughts and actions based on values rather than personal gain.

MENIFEE VALLEY

MASONIC LODGE

PO Box 312

Sun City, CA 92586



2B1  ASK1

THE REAL SECRET OF  
**FREEMASONRY**  
MAKING GOOD MEN BETTER